

MHS HH-34

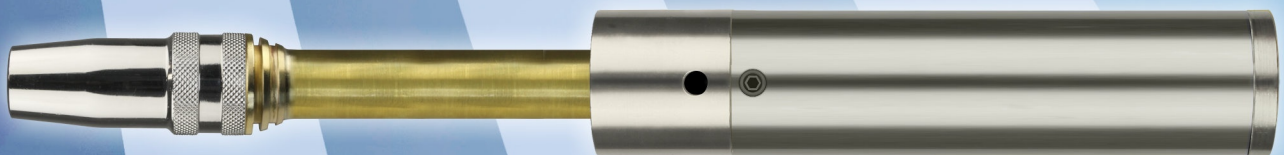
gas-cooled



340 Amp./100% duty cycle (CO₂)
320 Amp./100% duty cycle (mixed gas)

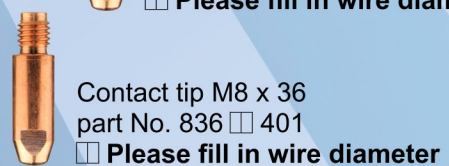
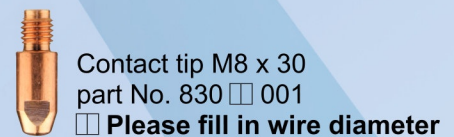
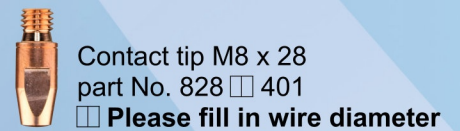
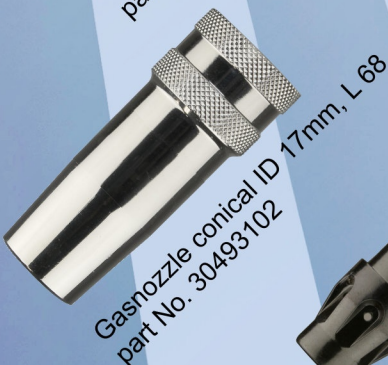
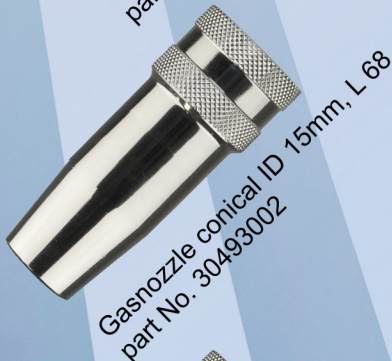
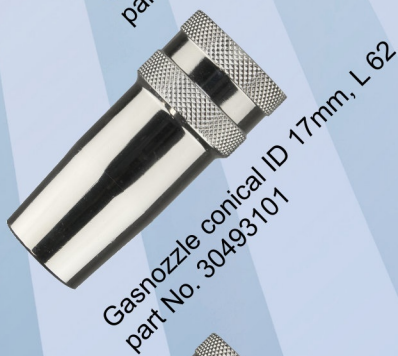
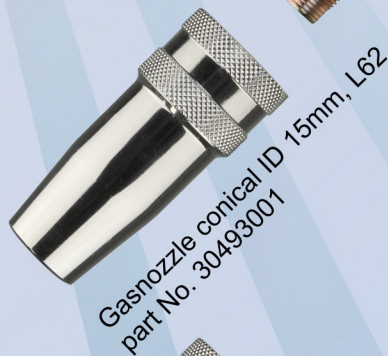
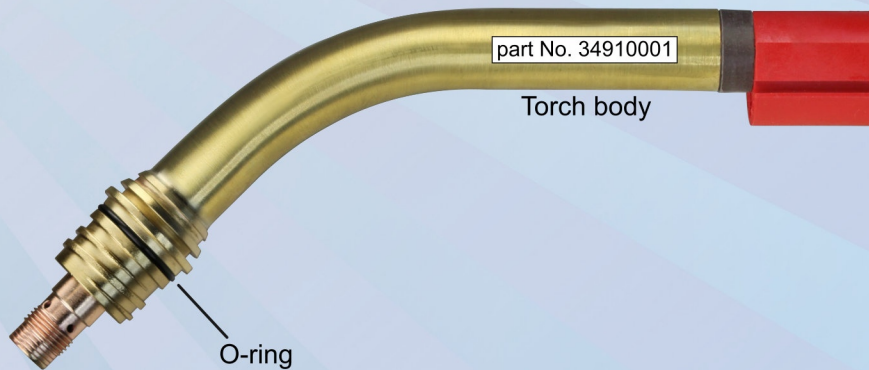
Spare parts like:

MHS HH-304 water-cooled



MHS HH-34

gas-cooled

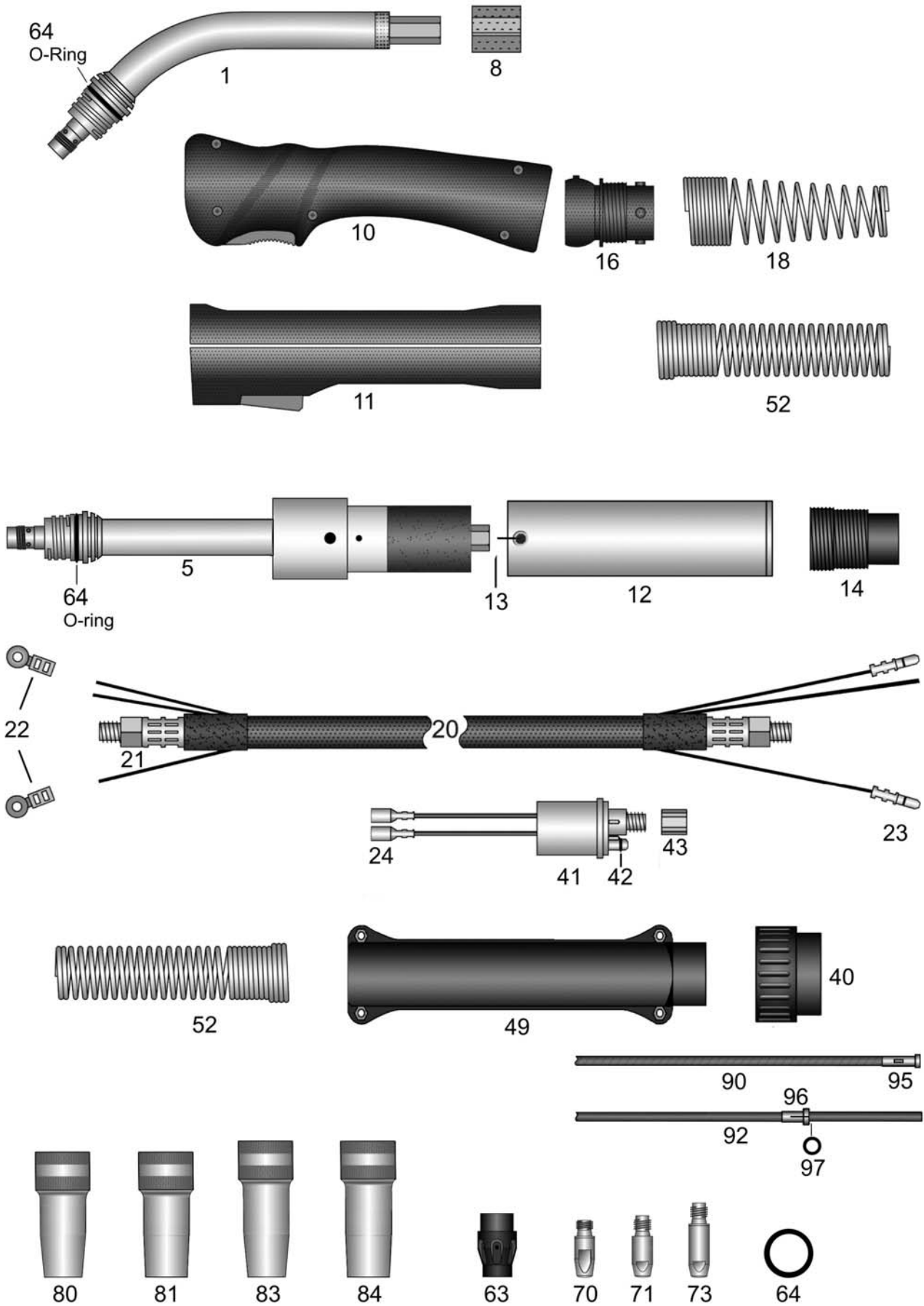


HSN 958



MHS HH-34 gas-cooled

340 Ampere at 60% duty cycle (CO₂) - 320 Ampere at 60% duty cycle (mixed gas)



HSN 957-1

MHS HH-34 (gas nozzle screwable)

Welding-torch MIG-MAG gas-cooled

340A at 60% duty cycle (CO₂) - 320A at 60% duty cycle (mixed gas)

Art.-No.

Spare parts as torch MHS HH-304 water-cooled

34000311	Torch MHS HH-34 / 3m EURO central adapter 42mm ² gas nozzle screwable
34000411	Torch MHS HH-34 / 4m EURO central adapter 42mm ² gas nozzle screwable
34000511	Torch MHS HH-34 / 5m EURO central adapter 42mm ² gas nozzle screwable
34050311	AUTomatic-torch MHS HH-34 / 3m EURO central adapter 42mm ² gas nozzle screwable

**For torches without EURO central-adaptor the following prices apply.
Please note that for some special machine side connections surcharges may arise,
which you will find in the appendix "A" custom made products.**

34000301	Torch MHS HH-34 / 3m 42mm ² gas nozzle screwable
34000401	Torch MHS HH-34 / 4m 42mm ² gas nozzle screwable
34000501	Torch MHS HH-34 / 5m 42mm ² gas nozzle screwable
34050301	AUTomatic-torch MHS HH-34 / 3m 42mm ² gas nozzle screwable

**Special lengths for hand- and AUTomatic-torches
please notice appendix "B".**

pg000001	Surcharge: Pistol-shape-handle / stabilizer
N.i. 91912453	Heat protection shield for pistol handle, screws included
29004602	Surcharge: Torch body with custom bending

Torch body and AUTomatic torch body with teflon insulation, brass outer tube with cooling ribs, very massive power conduit, front ceramic insulation, complete with insulator and contact tip holder M8. O-ring for gas nozzle seal

1	34910001	Swan neck fits gas nozzle screwable
5	34915001	AUTomatic-torch body fits gas nozzle screwable
8	15912301	Polyamid-torch body

**Handles complete with switch and screws
Ball joints or sockets are also included**

10	91912535	Ratio-handle 18mm with ball joint
10	91912435	Ratio-handle 18mm (**without ball joint**)
N.i.	91912438	Ratio microswitch DC2
N.i.	91912439	Push button red for Ratio handle also fits RAUCH handle
N.i.	91912441	Spring fits button Ratio grip handle and RAUCH grip handle
11	91912102	Industry-handle 18mm with ball joint
11	91912331	Industry-handle 18mm (**without ball joint**)
N.i.	91920411	Switch-set fits industry-handle for 16/18/20mm (11 parts)
N.i.	91920702	Screw M3x11,5mm fits Ratio/Industry/RAUCH handle and cable support
N.i.	91920703	M3 mounting socket fits Ratio/Industry/RAUCH handle and cable support

12	91912901	AUT handle tube, brass-cladded AD38mm for AUT-torch rubber cable support
13	91912911	Holding screw M4x6mm for AUT handle tube OD38mm
14	50191251	Rubber cable-support RETRO

16	91912704	Spring socket pistol side fits handle with ball joint
18	91912503	Cable support spring handle-side for torches with ball joint

20	36921311	Coaxial-cable 42mm ² / 3m fits EURO central adapter
20	36921411	Coaxial-cable 42mm ² / 4m fits EURO central adapter

MHS HH-34 (gas nozzle screwable)

Welding-torch MIG-MAG gas-cooled

340A at 60% duty cycle (CO₂) - 320A at 60% duty cycle (mixed gas)

Art.-No.		
20	36921511	Coaxial-cable 42mm ² / 5m fits EURO central adapter
21	15912211	Lock-nut M10x1-L9,5mm for coaxial-cable
22	91902811	Cable-plug fits industry-handle
23	91902901	Male connector cable-plug for machine side EURO central adapter
24	91903001	Female connector cable-plug fits machine side EURO central adapter
40	91900701	Terminal nut insulated fits EURO central adapter
41	91900101	Central adapter fixed contact-pins EURO central adapter
41	91900106	Central adapter spring contact-pins EURO central adapter
42	91900801	O-ring ID4-W1mm fits gas-nipple EURO central adapter
43	91900901	Swivel nut IT-M10x1 (rounded edges) fits EURO central adapter
49	91900561	Cable support machine side (screws included) fits EURO central adapter
N.i.	91920702	Screw M3x11,5mm fits Ratio/Industry/RAUCH handle and cable support
N.i.	91920703	M3 mounting socket fits Ratio/Industry/RAUCH handle and cable support
N.i.	91900601	Attachment screw M4x6mm fits cable support EURO central adapter
52	91912502	Cable support spring fits handles without ball joint and for EURO
63	30491201	HT-gasdiffusor black power with rib-like gas conduit
64	30418151	O-ring ID20-W1,5
Contact tip M8-L28-D10 fits on some special Holch torch types and various genuine Dinse torches.		
70	82808401	Contact tip M8-L28-D10 CuCrZr 0,8
70	82810401	Contact tip M8-L28-D10 CuCrZr 1,0
70	82812401	Contact tip M8-L28-D10 CuCrZr 1,2
70	82814401	Contact tip M8-L28-D10 CuCrZr 1,4
70	82816401	Contact tip M8-L28-D10 CuCrZr 1,6
71	83008001	Contact tip M8-L30-AD10 0,8
71	83010001	Contact tip M8-L30-AD10 1,0
71	83012001	Contact tip M8-L30-AD10 1,2
71	83014001	Contact tip M8-L30-AD10 1,4
71	83016001	Contact tip M8-L30-AD10 1,6
71	83008301	Contact tip M8-L30-AD10 0,8 nickel-plated
71	83010301	Contact tip M8-L30-AD10 1,0 nickel-plated
71	83012301	Contact tip M8-L30-AD10 1,2 nickel-plated
71	83014301	Contact tip M8-L30-AD10 1,4 nickel-plated
71	83016301	Contact tip M8-L30-AD10 1,6 nickel-plated
71	83008401	Contact tip M8-L30-D10 CuCrZr 0,8
71	83010401	Contact tip M8-L30-D10 CuCrZr 1,0
71	83012401	Contact tip M8-L30-D10 CuCrZr 1,2
71	83014401	Contact tip M8-L30-D10 CuCrZr 1,4
71	83016401	Contact tip M8-L30-D10 CuCrZr 1,6
73	83608401	HD-contact tip M8-L36-AD10 CuCrZr 0,8
73	83610401	HD-contact tip M8-L36-AD10 CuCrZr 1,0
73	83612401	HD-contact tip M8-L36-AD10 CuCrZr 1,2
73	83614401	HD-contact tip M8-L36-AD10 CuCrZr 1,4
73	83616401	HD-contact tip M8-L36-AD10 CuCrZr 1,6

MHS HH-34 (gas nozzle screwable)

Welding-torch MIG-MAG gas-cooled

340A at 60% duty cycle (CO₂) - 320A at 60% duty cycle (mixed gas)

Art.-No.		
80	30493001	Gas nozzle conical-ID15mm HH-34 / HH-304 L62mm
81	30493101	Gas nozzle conical-ID17mm HH-34 / HH-304 L62mm
83	30493002	Gas nozzle conical-ID15mm HH-34 / HH-304 L68mm fits HD-contact tip
84	30493102	Gas nozzle conical-ID17mm HH-34 / HH-304 L68mm fits HD-contact tip
Spirals and liners also available in other sizes on inquiry!		
90	15451311	Guide spiral-liner blue ID1,5-AD4,5 fits 3m / EURO central adapter
90	15451411	Guide spiral-liner blue ID1,5-AD4,5 fits 4m / EURO central adapter
90	15451511	Guide spiral-liner blue ID1,5-AD4,5 fits 5m / EURO central adapter
90	20451311	Guide spiral-liner red ID2,0-AD4,5 fits 3m / EURO central adapter
90	20451411	Guide spiral-liner red ID2,0-AD4,5 fits 4m / EURO central adapter
90	20451511	Guide spiral-liner red ID2,0-AD4,5 fits 5m / EURO central adapter
90	23481311	Spiral-liner green ID2,3-AD4,8 fits 3m / EURO central adapter
90	23481411	Spiral-liner green ID2,3-AD4,8 fits 4m / EURO central adapter
90	23481511	Spiral-liner green ID2,3-AD4,8 fits 5m / EURO central adapter
90	25451311	Flatwire spiral-liner yellow ID2,5-AD4,5 fits 3m / EURO central adapter
90	25451411	Flatwire spiral-liner yellow ID2,5-AD4,5 fits 4m / EURO central adapter
90	25451511	Flatwire spiral-liner yellow ID2,5-AD4,5 fits 5m / EURO central adapter
92	20393311	PTFE-carbon core liner ID2,0-AD3,9 fits 3m / EURO central adapter
92	20393411	PTFE-carbon core liner ID2,0-AD3,9 fits 4m / EURO central adapter
92	20393511	PTFE-carbon core liner ID2,0-AD3,9 fits 5m / EURO central adapter
92	20406311	Carbon-PA core liner ID2,0-AD4,0 fits 3m / EURO central adapter
92	20406411	Carbon-PA core liner ID2,0-AD4,0 fits 4m / EURO central adapter
92	20406511	Carbon-PA core liner ID2,0-AD4,0 fits 5m / EURO central adapter
92	20404311	ULTRA-liner (brown) ID2,0-OD4,0 fits 3m / EURO central adapter
92	20404411	ULTRA-liner (brown) ID2,0-OD4,0 fits 4m / EURO central adapter
92	20404511	ULTRA-liner (brown) ID2,0-OD4,0 fits 5m / EURO central adapter
N.i.	20405002	Brass spiral liner (marked blue) ID2,0-OD4,0mm L300mm fits liner OD3,9/4,0mm
N.i.	25405002	Bronze spiral liner (marked blue) ID2,5-OD4,0mm L300mm fits liner OD3,9/4,0mm
95	91905721	Nipple (brass L-30mm) fits spiral liner EURO central adapter AD4,5mm
96	91906111	Nipple fits core liner EURO central adapter AD3,9/4,0mm
97	91906131	O-ring ID3,5-W1,5mm fits core liners
N.i.	91906112	Support tube, brass ID4,4 - AD5,0 - L200mm